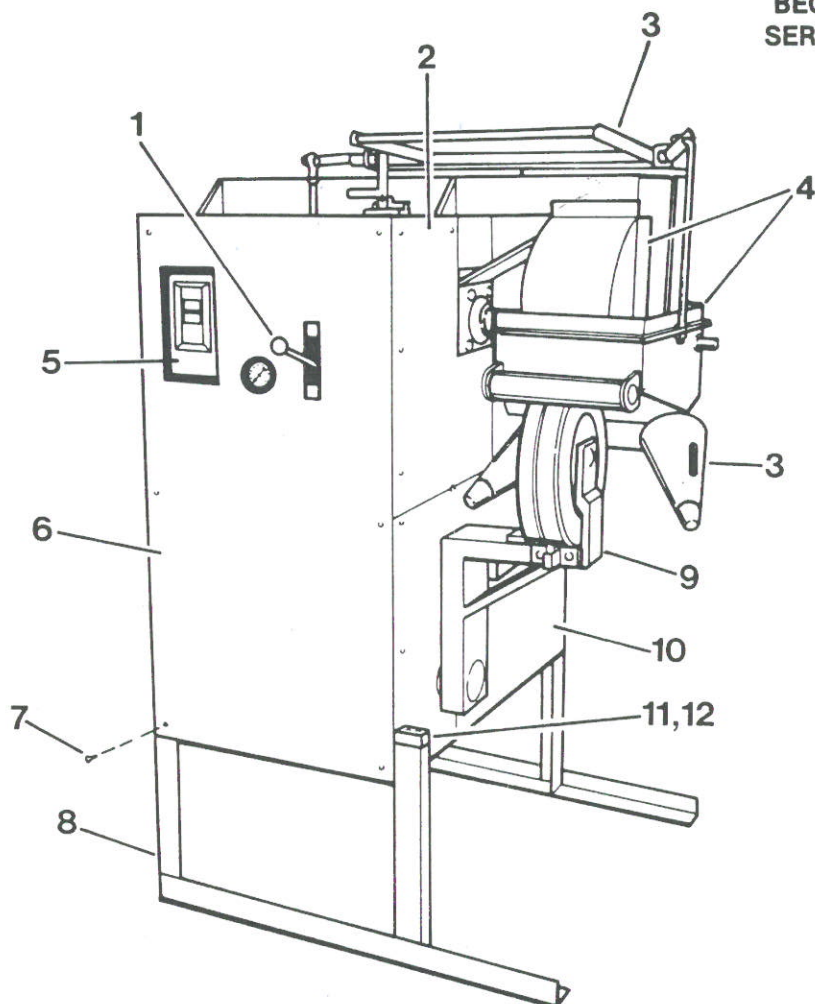


Branick

Tire Handling Equipment

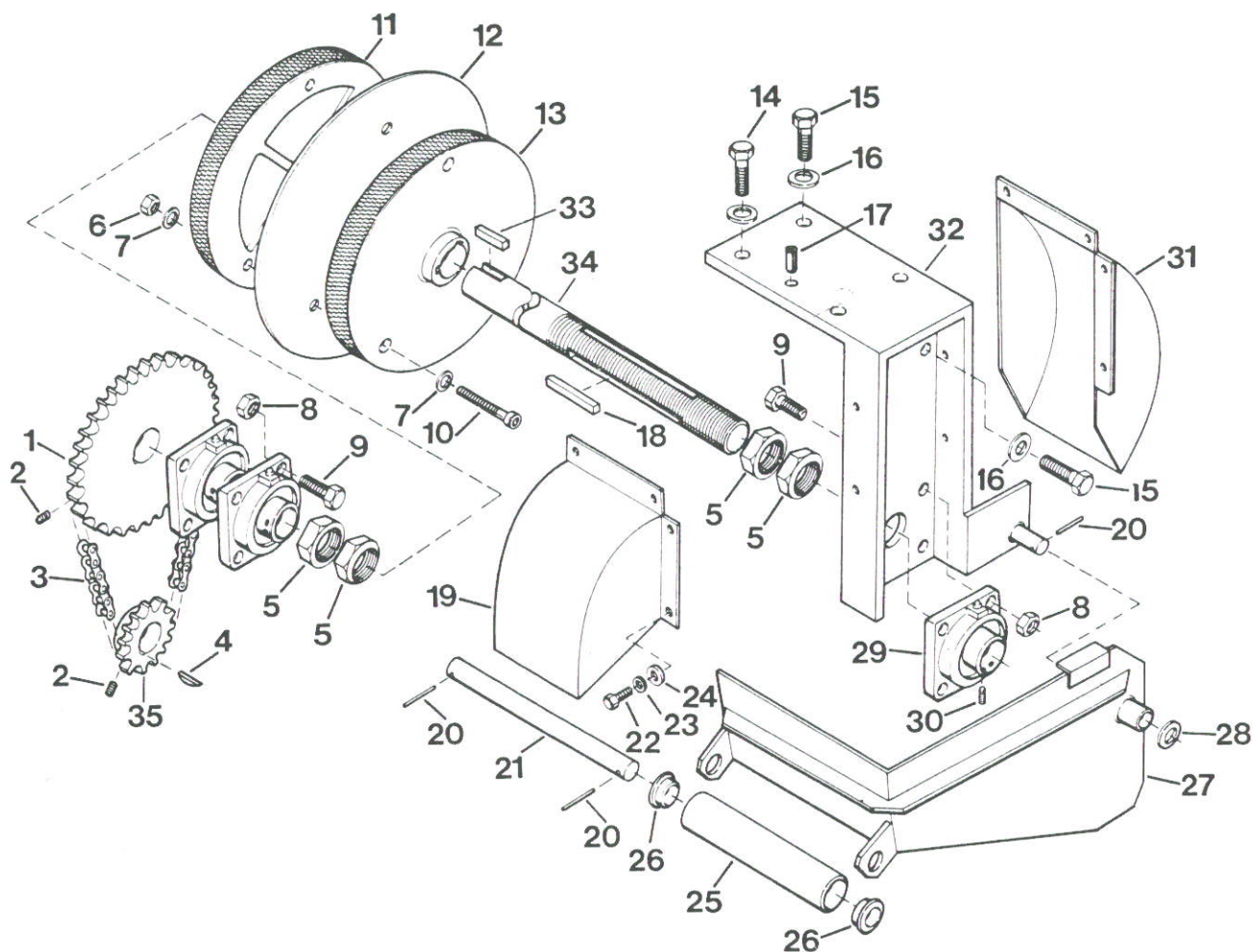
Repair Parts Information Tire Cutter MODELS BTC and BTC/G

BEGINNING WITH
SERIAL NO. 81B449



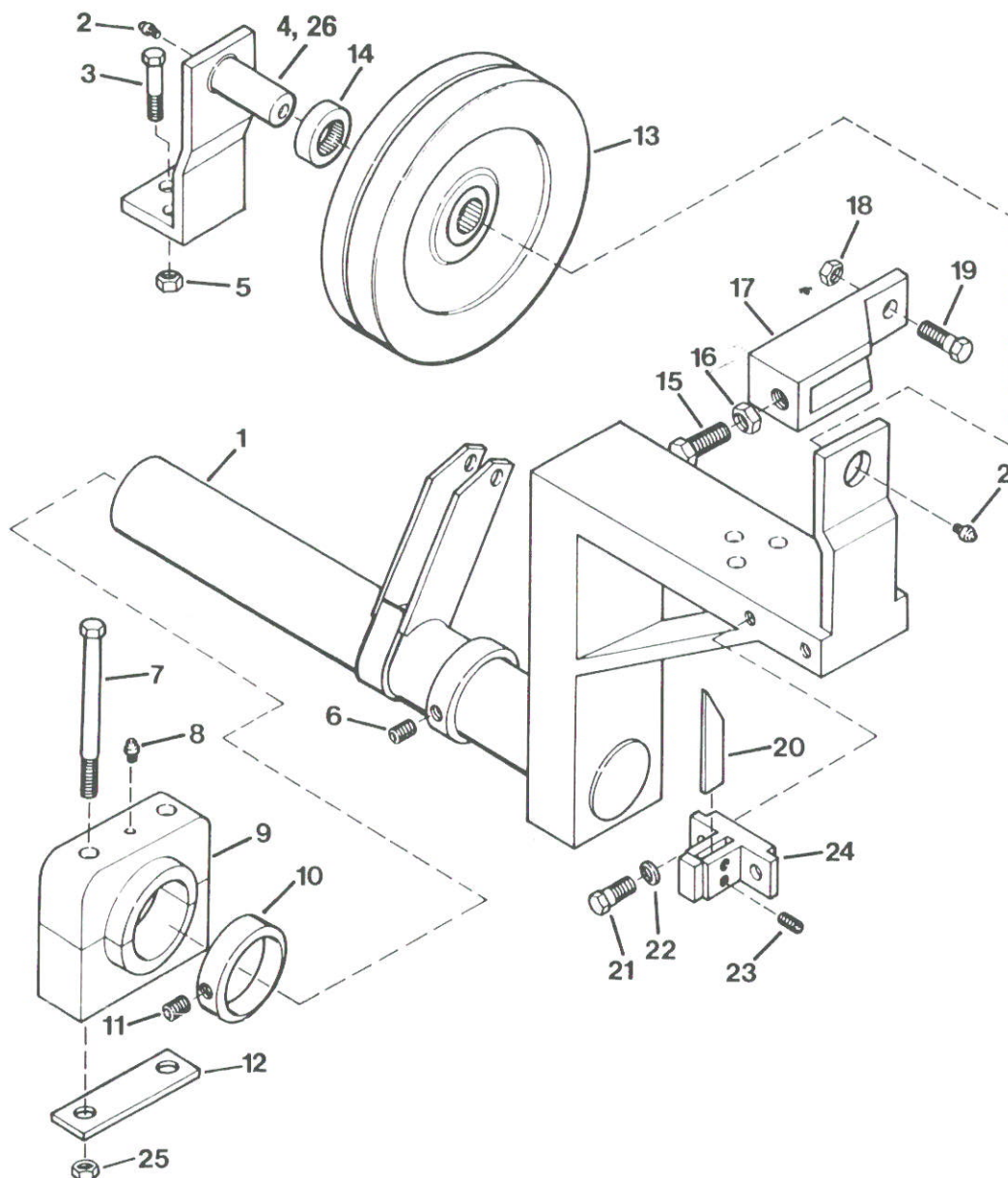
ITEM NO.	PART NO. PAGE NO.	DESCRIPTION	ITEM NO.	PART NO. PAGE NO.	DESCRIPTION
1		Hydraulic System - BTC	13	ND 30.098	Rear Panel, BTC - Not Shown
2	ND 31.098	Hydraulic System - BTC/G		ND 90.098	(1 req'd)
3	See pg. 10	Right Upper Panel (1 req'd)			Rear Panel, BTC/G - Not Shown
4	See pg. 3	Safety Bar and Tire Guide Group	14	ND 33.098	(1 req'd)
5	See pg. 9	Blade Drive and Shield Group		ND 51.098	Left Panel, BTC, Not Shown
		Electrical System			(1 req'd)
		and Related Items			Left Panel, BTC/G, Not Shown
6	ND 38.098	Front Panel (1 req'd)	15	ND 88.017	(1 req'd)
7	ND 148.028	1/4 NC Pan HD. Screws	16	ND 51.046	Rear Panel, BTC/G, Not Shown
		(37 req'd)			(4 req'd)
8	ND 65.900	Frame - BTC	17	ND 322.028	Screw, BTC/G, Not Shown
	ND 43.001	Frame - BTC/G			(16 req'd)
9	See pg. 4	Platen Wheel Group	18	ND 22.055	Lock Nut, BTC/G, Not Shown
10	ND 32.098	Right Lower Panel (1 req'd)			(16 req'd)
11	ND 25.267	Swing Arm Stop Pad (1 req'd)			
12	ND 113.028	1/4 NC RD. HD. Machine Screw			
		(2 req'd)			

Branick®



BLADE DRIVE AND SHIELD GROUP

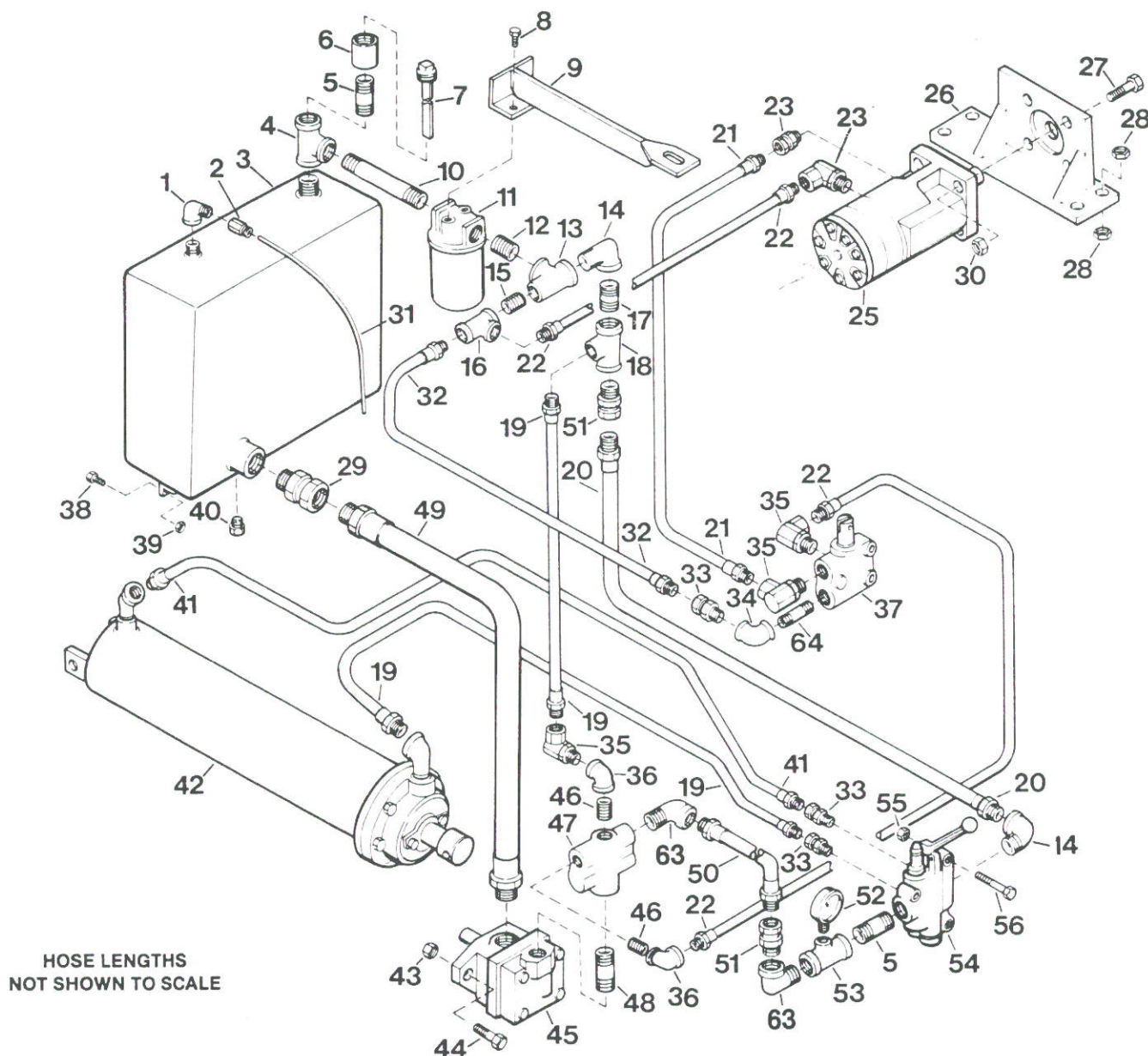
ITEM NO.	PART NO.	NO. REQ'D	DESCRIPTION	ITEM NO.	PART NO.	NO. REQ'D	DESCRIPTION
1	ND 10.228	1	32 Tooth Sprocket	20	ND 6.061	2	1/8 Drive Pin x 1 1/4 Long
2	ND 118.028	4	3/8 SKT SS x 1/2 Long	21	ND 160.268	1	Roller Shaft
3	ND 7.066	1	No. 60 Chain - 37 3/4	22	ND 10.028	8	1/4 NC HHCS x 3/4 Long
4	ND 36.251	1	5/16 Woodruff Key x 1 1/4 Long	23	ND 8.108	8	1/4 Shakeproof Washer
5	ND 51.055	4	1 1/2 NF Hex Jam Nut	24	ND 13.108	8	1/4 Flat Washer
6	ND 210.055	3	3/8 Hex Locknut	25	ND 161.268	1	Shield Roller
7	ND 15.108	6	3/8 Plain Washer	26	ND 16.107	2	Roller Bearing
8	ND 58.055	12	1/2 NC Hex Locknut	27	ND 556.950	1	Shield Assembly
9	ND 47.028	12	1/2 NC HHCS x 1 3/4 Long	28	ND 2.039	1	3/4 Machine Bushing
10	ND 154.028	3	3/8 SKT HD CS x 3 1/2 Long	29	ND 27.107	3	1 1/2 Side Flange Brg.
11	ND 387.101	1	Inner Blade Plate	30	ND 139.028	2	5/16 NF SKT SS x 1 Long
12	ND 6.885	1	Knife Blade	31	ND 485.950	1	Rear Knife Guard
13	ND 430.101	1	Outer Blade Plate	32	ND 379.950	1	Outside Brg. Brkt.
14	ND 25.028	2	1/2 NC HHCS x 1 1/2 Long	33	ND 12.251	1	3/8 x 3/8 Key x 1 1/4 Long
15	ND 34.028	4	1/2 NC HHCS x 1 1/4 Long	34	ND 84.149	1	Shaft
16	ND 44.108	6	1/2 Flat Washer	35	ND 28.228	1	14 Tooth Sprocket - Elec. Mtr.
17	ND 60.061	1	3/8 Drive Pin x 3/4 Long		ND 29.228	1	12 Tooth Sprocket - Gas Eng.
18	ND 11.251	2	3/8 x 3/8 Key x 3 1/8 Long	36	ND 5.816	2	Blade Tightening Wrench (not shown)
19	ND 484.950	1	Front Knife Guard				



PLATEN WHEEL GROUP

ITEM NO.	PART NO.	NO. REQ'D	DESCRIPTION	ITEM NO.	PART NO.	NO. REQ'D	DESCRIPTION
1	ND 3.964	1	Pivot Shaft (includes items 2, 3, 4, 5, & 6)	15	ND 319.028	1	3/4 NC HHCS x 2 1/2 Long
2	ND 8.096	2	1/4 Grease Zerk	16	ND 15.055	1	3/4 NC Hex Jam Nut
3	ND 39.028	3	3/8 NC HHCS x 1 3/4 Long	17	ND 623.950	1	Pivot Arm Stop
4	ND 4.964	1	Platen Wheel Shaft w/Race	18	ND 58.055	2	1/2 NC Hex Lock Nut
5	ND 210.055	3	3/8 NC Hex Lock Nut	19	ND 25.028	2	1/2 NC HHCS x 1 1/2 Long
6	ND 118.028	1	3/8 NC SKT HD SS x 1/2 Long	20	ND 49.885	1	Groove Cleaner Blade
7	ND 126.028	4	5/8 NC HHCS x 7 1/2 Long	21	ND 21.028	2	3/8 NC HHCS x 1 Long
8	ND 8.096	2	1/4 Grease Zerk	22	ND 57.108	2	3/8 Shakeproof Washer
9	ND 30.107	2	Sleeve Bearing	23	ND 158.028	2	5/16 NC SK SS x 5/8 Long
10	ND 14.489	1	Set Collar	24	ND 579.950	1	Groove Cleaner Bracket
11	ND 118.028	1	3/8 NC SKT HD SS x 1/2 Long	25	ND 11.055	4	5/8 NC Hex Nut
12	ND 28.007	2	Swing Arm Strain Relief	26	ND 32.107	2	Race (after serial no. 84J557) (before serial no. 84J557 order item 4)
13	ND 3.972	1	Platen Wheel w/Bearings				
14	ND 31.107	2	Bearings for Platen Whl.				

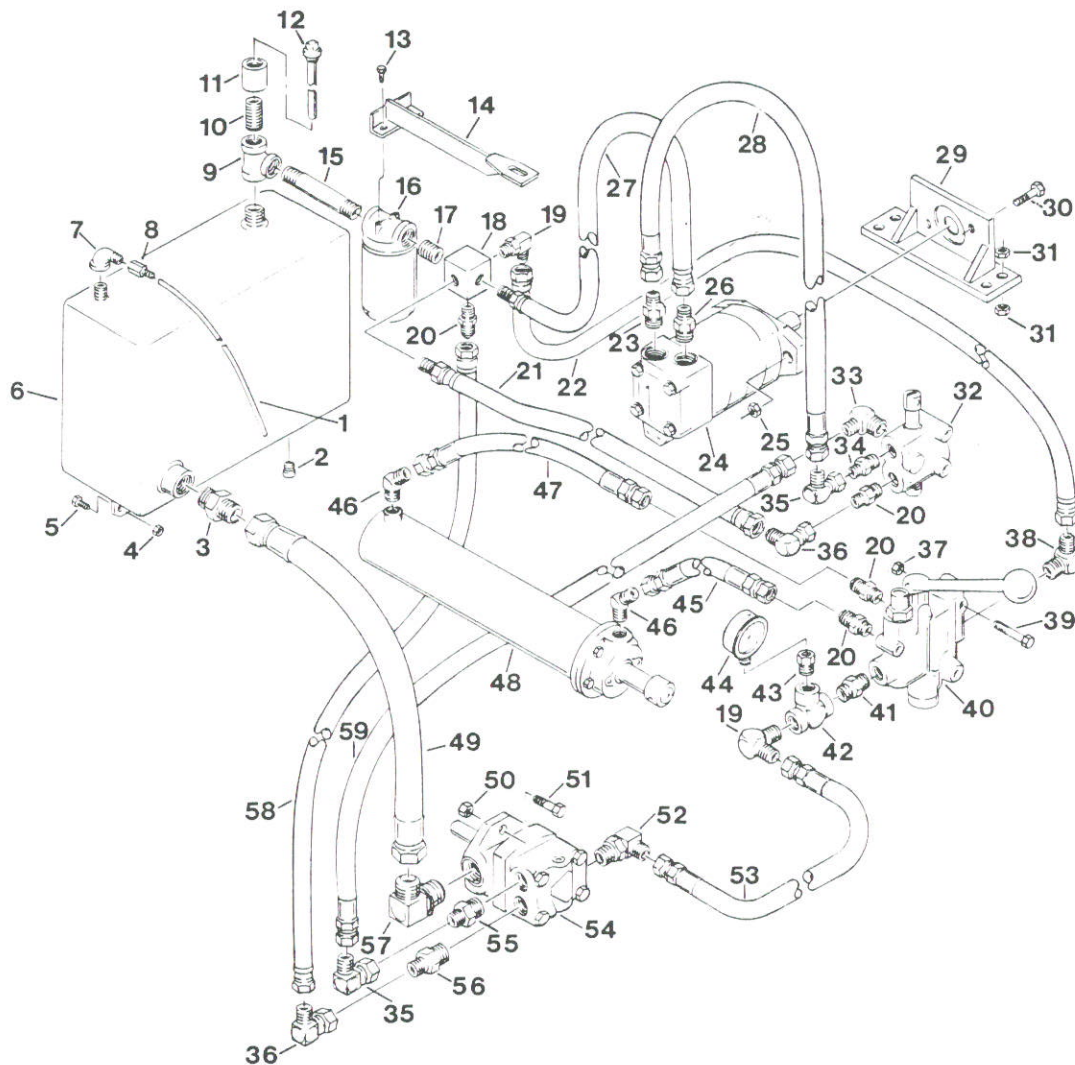
HYDRAULIC SYSTEM — MODEL BTC (ELECTRIC MOTOR) **SERIAL NO. 81B449 - 84D547**



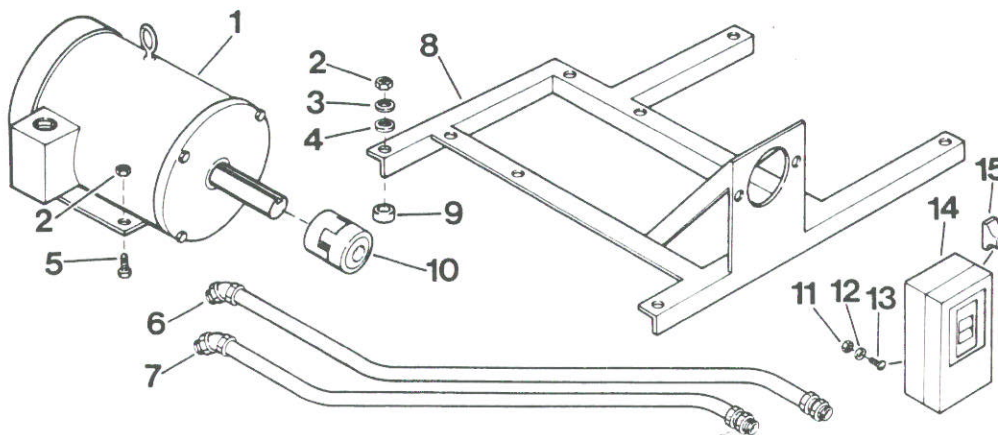
HOSE LENGTHS
 NOT SHOWN TO SCALE

ITEM NO.	PART NO.	NO. REQ'D	DESCRIPTION	ITEM NO.	PART NO.	NO. REQ'D	DESCRIPTION
1	ND 38.096	1	1/4 Street Ell	17	ND 156.096	1	3/4 Pipe Nipple x 1 1/2 Long
2	ND 14.096	1	1/4 - 1/4 Female Connector	18	ND 27.096	1	3/4 x 3/4 x 1/2 Pipe Tee
3	ND 1.861	1	7 Gallon Reservoir	19	ND 28.646	2	1/2 Hyd. Hose x 34 1/2 Long
4	ND 29.096	1	3/4 Pipe Tee	20	ND 15.646	1	3/4 Hyd. Hose x 39 Long
5	ND 17.096	2	3/4 Pipe Nipple x 2 Long	21	ND 37.646	1	1/2 Hyd Hose x 27 1/2 Long
6	ND 14.034	1	3/4 Pipe Coupler	22	ND 13.646	2	1/2 Hyd. Hose x 17 1/2 Long
7	ND 9.023	1	Filler Plug Gauge	23	ND 135.096	2	Swivel, 7/8 - 14 to 1/2 Pipe
8	ND 10.028	2	1/4 NC HHCS x 3/4 Long	25	ND 27.259	1	Orbit Motor
9	ND 15.878	1	Filter Stabilizer	26	ND 13.848	1	Orbit Motor Mount
10	ND 77.096	1	3/4 Pipe Nipple x 6 Long	27	ND 37.028	4	7/16 NC HHCS x 1 1/4 Long
11	ND 15.018	1	Filter (includes element)	28	ND 220.055	8	1/2 NC Hex Jam Nut
	ND 6.018	1	Element Only	29	ND 164.096	1	1 1/4 Straight Swivel
12	ND 18.096	1	3/4 Close Nipple	30	ND 21.055	4	7/16 NC Hex Lock Nut
13	ND 90.096	1	3/4 x 1/2 x 3/4 Pipe Tee	31	ND 64.646	1	1/4 Nylon Tube x 48 Long
14	ND 56.096	2	1/2 - 90° Street Ell	32	ND 37.646	1	1/2 Hyd. Hose x 27 1/2 Long
15	ND 58.096	1	1/2 Close Nipple				
16	ND 70.096	1	1/2 Pipe Tee				

HYDRAULIC SYSTEM - MODEL BTC (ELECTRIC MOTOR) BEGINNING WITH SERIAL NO. 84D548

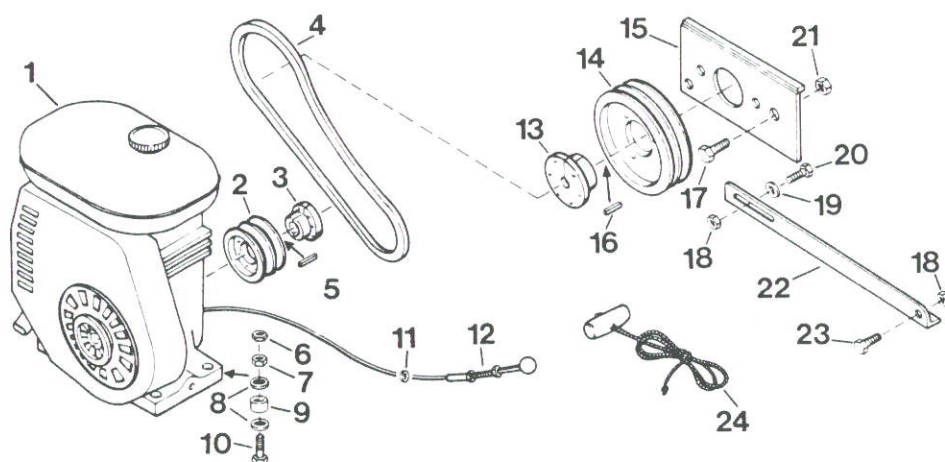


ITEM NO.	PART NO.	NO. REQ'D	DESCRIPTION	ITEM NO.	PART NO.	NO. REQ'D	DESCRIPTION
1	64.646	1	Tube	17	18.096	1	Close Nipple
2	11.020	1	Pipe Cap	18	82.038	1	Filter Manifold
3	265.096	1	Male Connector	19	262.096	2	Male Elbow
4	9.555	3	Nut	20	258.096	4	Male Connector
5	60.028	3	Capscrew	21	8.940	1	Hose
6	1.861	1	Reservoir	22	6.940	1	Hose
7	38.096	1	Street Elbow	23	290.096	1	Str. Thd. Conn.
8	14.096	1	Female Connector	24	27.259	1	Orbit Motor
9	29.096	1	Pipe Tee	25	21.055	4	Nut
10	17.096	1	Pipe Nipple	26	259.096	1	Str. Thd. Conn.
11	14.034	1	Pipe Coupler	27	5.940	1	Hose
12	9.023	1	Filler Plug Gauge	28	121.646	1	Hose
13	10.028	2	Capscrew	29	13.848	1	Orbit Motor Mount
14	15.878	1	Filter Stabilizer	30	37.028	4	Capscrew
15	77.096	1	Pipe Nipple	31	220.055	8	Nut
16	15.018 6.018	1 1	Filter (includes element) Element Only	32	57.190	1	Safety Valve



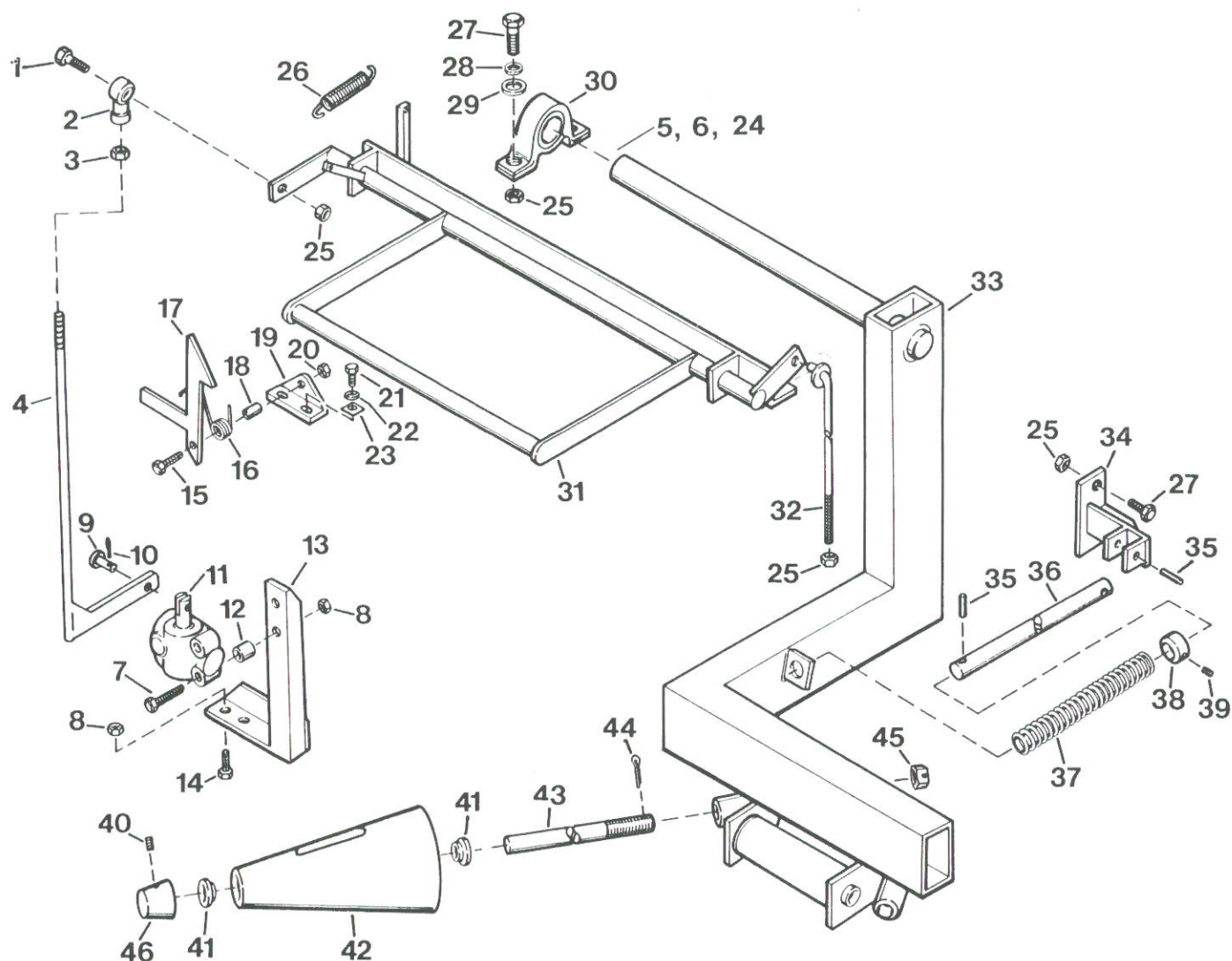
ELECTRICAL SYSTEM — MODEL BTC ONLY

ITEM NO.	PART NO.	NO. REQ'D	DESCRIPTION	ITEM NO.	PART NO.	NO. REQ'D	DESCRIPTION
1	ND 14.259	1	7.5 HP Electric Motor	9	ND 16.039	1	Rubber Bushing
2	ND 210.055	8	3/8 NC Hex Lock Nut	10	ND 17.034	1	Coupler
3	ND 15.108	4	3/8 Flat Washer	11	ND 52.055	3	1/4 NC Hex Nut
4	ND 58.108	4	3/8 Rubber Washer	12	ND 8.108	3	1/4 Lock Washer
5	ND 21.028	4	3/8 NC HHCS x 1 Long	13	ND 114.028	3	1/4 NC Rd. HD. MS. x 3/4 Long
6	ND 665.950	1	Switch to Motor Cable	14	ND 3.372	1	Manual Starter
7	ND 565.950	1	Switch to Junction Cable	15	ND 146.980	3	W60 Heater - 208V/3PH (Baldor)
8	ND 656.950	1	Electric Motor Frame (serial #81B449 - 84D547)		ND 147.980	3	W59 Heater - 230V/3PH (Baldor)
	ND 30.848	1	Electric Motor Frame (beginning with ser. #84D548)		ND 148.980	3	W51 Heater - 460V/3PH (Baldor)



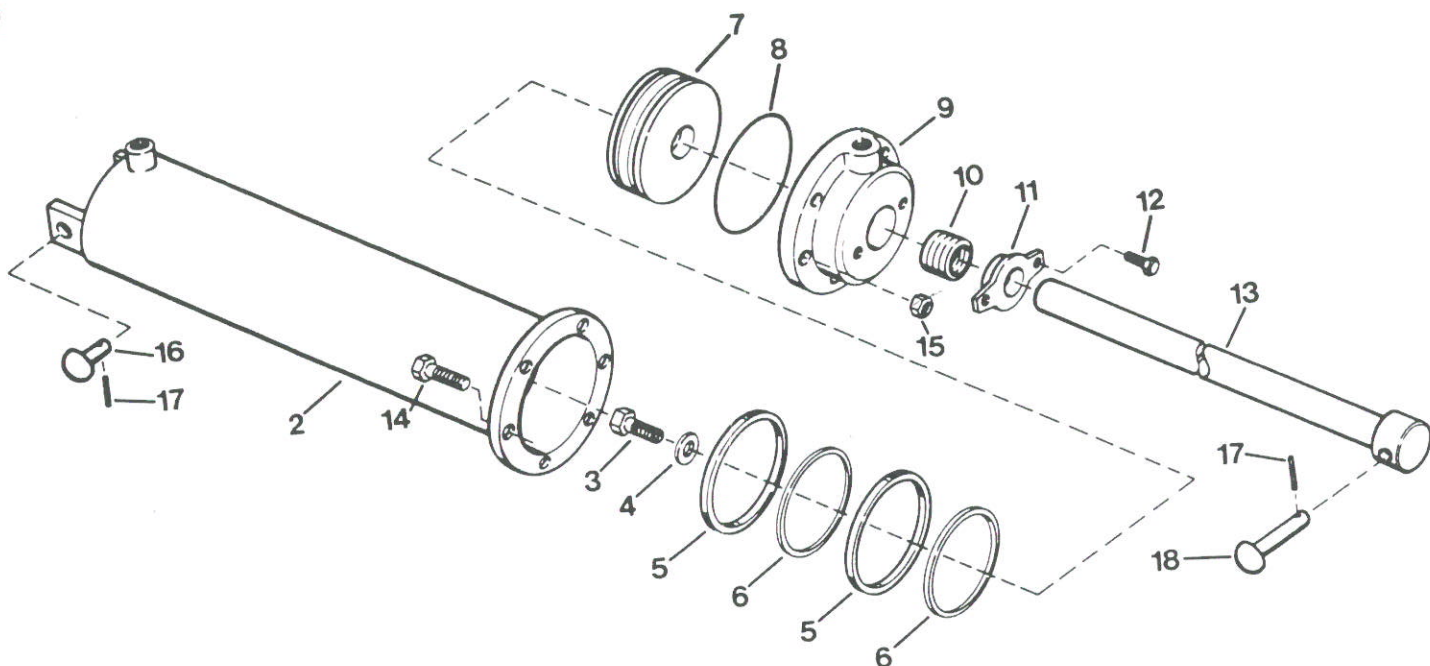
GASOLINE MOTOR AND COMPONENTS — MODEL BTC/G ONLY

ITEM NO.	PART NO.	NO. REQ'D	DESCRIPTION	ITEM NO.	PART NO.	NO. REQ'D	DESCRIPTION
1	ND 15.259	1	10.5 HP Gasoline Motor	13	ND 28.039	1	Pulley Bushing (pump)
2	ND 18.019	1	4" Pulley (motor)	14	ND 19.019	1	8.2" PD Pulley
3	ND 29.039	1	Pulley Bushing (motor)	15	ND 677.950	1	Pump Mount
4	ND 9.014	2	A42 Industrial Belt	16	ND 17.251	1	3/16 Key x 1 5/8 Long
5	ND 5.251	1	1/4 Key x 2 1/8 Long	17	ND 285.028	1	1/2 NC HHCS x 1 Long
6	ND 3.055	4	7/16 NC Hex Jam Nut	18	ND 210.055	2	3/8 NC Hex Lock Nut
7	ND 21.055	4	7/16 NC Hex Lock Nut	19	ND 15.108	1	3/8 Plain Washer
8	ND 39.108	8	7/16 Plain Washer	20	ND 46.028	1	3/8 NC HHCS x 1 1/4 Long
9	ND 9.108	4	Motor Insulator	21	ND 58.055	1	1/2 NC Hex Lock Nut
10	ND 167.028	4	7/16 NC HHCS x 2 1/8 Long	22	ND 169.630	1	Belt Tightener
11	ND 1.808	2	Panel Grommet	23	ND 21.028	1	3/8 NC HHCS x 1 Long
12	ND 28.647	1	Throttle Cable	24	ND 19.885	1	Starting Rope



SHUT-OFF AND TIRE GUIDE GROUP

ITEM NO.	PART NO.	NO. REQ'D	DESCRIPTION	ITEM NO.	PART NO.	NO. REQ'D	DESCRIPTION
1	46.028	1	Capscrew	24	49.028	4	Socket Head Set Screw
2	51.107	1	Rod End	25	210.055	6	Hex Lock Nut
3	73.055	1	Hex Jam Nut	26	41.110	1	Shut-Off Valve Spring
4	7.844	1	Valve Lever	27	21.028	4	Capscrew
5	7.039	2	Machine Bushing	28	40.108	4	Shakeproof Washer
6	37.489	2	Collar	29	15.108	4	Flat Washer
7	131.028	2	Capscrew	*30	20.107	2	Pillow Block Bearing
8	9.055	4	Hex Nut	31	558.950	1	Shut-Off Valve Bar Frame
9	109.061	1	Clevis Pin	32	2.846	1	Shut-Off Valve Shield Link
10	28.061	1	Cotter Pin	33	507.950	1	Tire Guide Frame
11	See pg. 6	1	Shut-Off Valve	34	516.950	1	Spring Rod Bracket
12	57.446	2	Shut-Off Valve Spacer	35	81.061	2	Drive Pin
13	3.848	1	Shut-Off Valve Mount	36	117.149	1	Spring Rod
14	14.028	2	Capscrew	37	34.110	1	Return Spring
15	121.028	1	Capscrew	38	16.489	1	Return Spring Collar
16	28.110	1	Shut-Off Valve Latch Spring	39	29.028	1	Socket Head Set Screw
17	674.950	1	Shut-Off Valve Hook	40	28.028	2	Socket Head Set Screw
18	57.446	1	Shut-Off Valve Latch Spacer	41	9.107	4	Cone Bearing
19	247.111	1	Shut-Off Valve Latch Brkt.	42	6.281	2	Positioning Cone
20	2.055	1	Hex Jam Nut	43	38.104	2	Cone Shaft
21	12.028	2	Capscrew	44	15.061	2	Cotter Key
22	3.108	2	Shakeproof Washer	45	14.055	2	Hex Castle Nut
23	563.101	1	Spring Hold Down	46	5.281	2	Cone Point



ND 404.900 3½" DIA. HYD. CYL. (COMPLETE ASS'Y)

ITEM NO.	PART NO.	NO. REQ'D	DESCRIPTION
2	ND 578.950	1	Hydraulic Cylinder
3	ND 239.028	1	9/16 NC HHCS x 1¼ Long
* 4	ND 240.167	1	14 MM Gasket
* 5	ND 4.044	2	3½" V-Piston Ring
* 6	ND 3.167	2	Vellumoid Gasket
7	ND 9.051	1	3½" Piston
* 8	ND 10.041	1	4" O-Ring
9	ND 46.098	1	3½" Cover Plate
*10	ND 1.076	1	Crane Packing
11	ND 3.044	1	Pkg. Retainer Ring
12	ND 14.028	2	5/16 NC HHCS x 1 Long
13	ND 577.950	1	Piston Rod
14	ND 25.028	6	½ NC HHCS x 1½ Long
15	ND 58.055	6	½ NC Hex Nut
RELATED ITEMS NOT LISTED PREVIOUSLY			
16	ND 5.003	2	5/8 Dia. Pin x 1¼ Long
17	ND 5.061	3	1/8 Drive Pin x 1 Long
18	ND 27.003	1	5/8 Dia. Pin x 3 Long



Tire Handling Equipment

Operating Instructions

Tire Cutter

MODELS BTC & BTC-G

ASSEMBLING INSTRUCTIONS:

ELECTRICAL — Connect electric service to terminal in junction box at lower rear of machine. Correct rotation of motor is shown with arrow. Standard unit is 220 volt 3 phase 60 cycle. All special electric service varying from this is marked.

GENERAL — Remove all ties holding guards, tire guide roller assembly, tire mandrel arm, safety stop bar and pivoted blade guard assembly.

HYDRAULIC VALVE HANDLE — Remove front cover panel and connect valve handle to stem on valve. Replace panel.

OPERATION:

1. Start machine at push button station.
2. Pull valve handle down to lower tire mandrel wheel.
3. Load tire on mandrel and raise valve handle up. Hold till tire is up tight against the blade and blade is completely through the casing, then release handle, which will return to neutral. **IMPORTANT! DO NOT HOLD VALVE HANDLE UP DURING CUTTING OPERATION.** This will cause the hydraulic oil to over heat. The machine will not cut tires when this occurs. After casing is split, lower valve handle to lower tire and mandrel.
4. Clean rubber and dirt from blade groove in mandrel when needed.

SAFETY STOP BAR:

The safety stop bar is operated by pulling down on this bar. This stops the blade drive immediately. To re-start, release the hook latch and push bar to up position. The hydraulic cylinder still can be operated to lower mandrel and tire from blade as the safety stop bar only stops the knife blade.

CAUTION: Stop Bar must be in up or down position. Do not leave at a half-way position. **USE ONLY IN CASE OF EMERGENCY.** During normal operation use regular start and stop switch.

CAUTION: This hydraulic pressure is factory set.

DO NOT EXCEED 700 P.S.I. Pressures exceeding 700 PSI will cause damage to the machine with the possibility of injury to personnel. Pressure can be read when the pivot arm is against the down stop.

MAINTENANCE: **Note: Knife Blade Not Warranted**

KNIFE BLADE — The knife blade is made from a special alloy steel which will cut both wire cord and fabric tires. After cutting a few tires (especially wire cords) the blade edge will become slightly serrated. This does not affect the cutting capacity of the blade; in fact, the tooth effect improves the cutting ability.

WHEN BLADE BECOMES REALLY DULL, IT SHOULD BE REMOVED AS FOLLOWS:

1. Remove the outer bearing bracket by taking out the four top cap screws and the two front cap screws. Also loosen set screw in outside flanged bearing.
2. With large wrench provided, turn off the 1-1/2" hex nut on the outside end of the blade. **DO NOT TURN INSIDE NUT!** This nut locates the cutting blade in relation to the platen wheel. Misalignment can cause failure of the blade. Then remove side plates and blade. Blade can be ground at any blade sharpening service or in a machine shop. It is preferable to have an extra blade on hand. To reassemble reverse the above procedure.

NOTE: If care is taken, blade may be sharpened on machine with a file. Blade should be turning.

OIL RESERVOIR: The hydraulic oil in the reservoir is Mobil DTE 24 or equal. The correct amount is 29 quarts.

GENERAL — Grease the two pillow block bearings on the mandrel pivot shaft, the flanged bearings on the knife shaft and the bearings in the mandrel wheel at their respective grease zerks every three months.

Printed in U.S.A.